

Cardiac Metastasis from a Breast Cancer: MR Images

Giovanni Fazio* | Marcello Campione

*Correspondence: Giovanni Fazio

Address: Department of Cardiology, Angiology, Medicine and Long Term Care – Triolo Zancla Hospital – Palermo Studio medico Campione – Trapani, Italy

e-mail ✉: Faziogiova@gmail.com

Received: 10 January 2021; Accepted: 12 January 2021

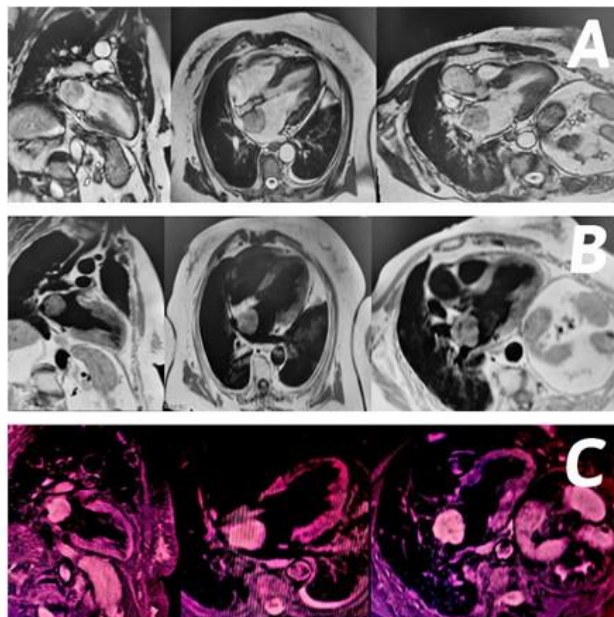
Copyright: © 2021 Fazio G. This is an open-access article distributed under the terms of the Creative Commons Attribution License, which permits unrestricted use, distribution, and reproduction in any medium, provided that the original work is properly cited.

ABSTRACT

The cardiac metastasys are uncommon. We submit a case of a cardiac metastasis from a breast cancer in a female 81 years old: magnetic resonance shows T1, T2 and STIR images of a cardiac mass based on the interatrial septum with a dimension of 3,6 x 3,8 cm. This mass is disomogeneous, Hyperintense in T1, in T2 and in STIR. Is present also a little circumcardiac pericardial effusion.

Keywords: *Magnetic Resonance, Cardiac Tumor, Metastasys, Breast Cancer*

MR Images



Magnetic resonance images of a cardiac metastasis from a breast cancer in a female 81 years old: the panel A, B and C show T1, T2 and STIR images of a cardiac mass based on the interatrial septum with a dimension of 3,6 x 3,8 cm. This mass is disomogeneous, Hyperintense in T1, in T2 and in STIR. Is present also a little circumcardiac pericardial effusion (Eun Young Chae *et al.*, 2015; Seitaro *et al.*, 2018).

References

Eun Young Chae, Jeong Eun Kim, Hee Hak Kim. Cardiac Metastasis from Breast Cancer as an Initial Focus of Recurrence. *Breast J* 2015; 21: 433-435.

Seitaro Oda, Kosuke Morita, Tomoyuki Okuaki, Tetsuo Ogino, Yasuyuki Yamashita. Cardiac diffusion-weighted magnetic resonance imaging for assessment of cardiac metastasis. *Eur Heart J Cardiovasc Imaging* 2018; 19: 683.